

A 7 530 50 / 51

			Control	Return Path	Channel 1	Channel FM	Channel VHF	Channel UHF	Channel SAT (IF)
75 Ω	< 1,5 dB	500 mA	22 kHz 0,6 V	4 - 30 MHz	47 - 68 MHz	87,5 - 108 MHz	120 - 470 MHz	470 - 862 MHz	950 - 2400 MHz

8 mm

5,5 < Ø < 7 mm

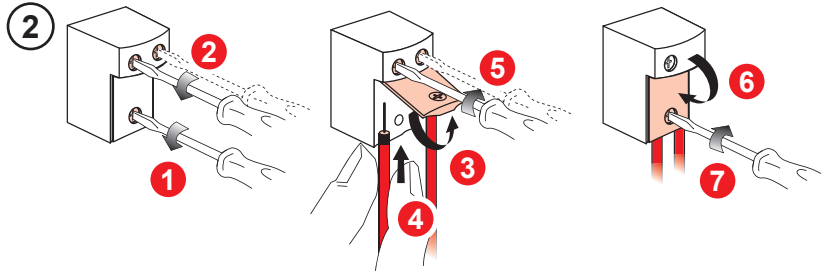
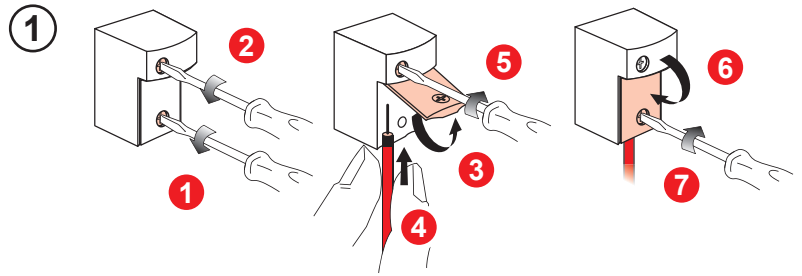
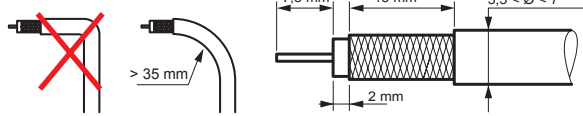
17 / 19 VATCA

8 mm

1, 2, 3, 4

CLIC

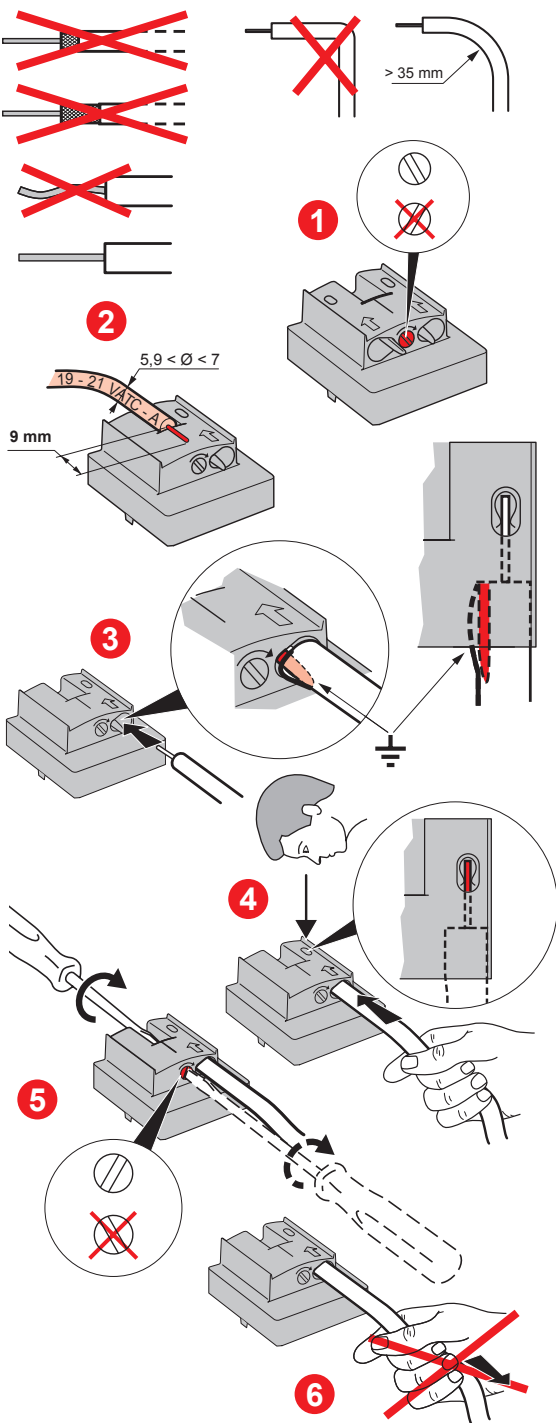
B 7 530 60 / 61



				Control
7 530 60	75 Ω	10 dB	500 mA	—
7 530 61		14 dB		

Return Path	Channel 1	Channel FM	Channel VHF	Channel UHF	Channel SAT (IF)
4 - 30 MHz	47 - 68 MHz	87,5 - 108 MHz	120 - 470 MHz	470 - 862 MHz	950 - 2150 MHz

C 7 530 52 / 57 / 58 / 59 / 62 / 63 / 64 / 65 / 71



Model	Device	Return Path	Channel 1	Channel FM	Channel VHF	Channel UHF	Channel SAT (IF)
7 530 57	TV-SAT						
7 530 59							
7 530 71							
7 530 62	TV-R						
7 530 63							
7 530 52	TV-R-SAT						
7 530 58							
7 530 64							
7 530 65							

Control	Return Path	Channel 1	Channel FM	Channel VHF	Channel UHF	Channel SAT (IF)			
Z	—	22 kHz	0,6 V	4 - 30 MHz	47 - 68 MHz	87,5 - 108 MHz	120 - 470 MHz	470 - 862 MHz	950 - 2400 MHz
7 530 57	75 Ω	500 mA	1,5 dB	4 - 30 MHz	47 - 68 MHz	87,5 - 108 MHz	120 - 470 MHz	470 - 862 MHz	950 - 2400 MHz
7 530 71									
7 530 52 / 58			1,5 dB			1,5 dB			2 dB
7 530 65						14 dB			
7 530 59 / 64						10 dB			
7 530 62						10 dB			
7 530 63						14 dB			